

# Development Section.

Shipbuilding

Commerce

Manufacturing

Real Estate

Agriculture

## FARM SHOW STARTS WELL AT HAYWARD

Organization Perfected With Strong Local Committees to Handle What Promises to Be a Most Successful Event

The Cities of Hayward and San Leandro Working Together as a Unit to Put Over a Big Display of Products

W. T. KNIGHTLY, Hayward banker, who is president of the Farm Products Show Association.



organization will give his personal attention to the show and the greatest enthusiasm has been shown by all concerned.

### Industrial News of the Eastbay

The Oakland Paving Company is getting ready for the 1919 season, preparing to crush and deliver their product in period quantities.

Superintendent W. B. Sedgley of the Great Western Power Company, with offices in Martinez, Concord and Pittsburg, is a guest at the Key Hotel in this week.

The Piedmont Electric Company has recently been made agents for the Edison Mazda lamps for the Piedmont district.

### San Jose Packers Consolidate Plants

Commissioner of Corporations E. C. Howell has been authorized in Heretofore Packing Company of San Jose to sell \$150,000 aggregate par value of its capital stock at par for cash, and to issue \$150,000 aggregate par value of its shares to George N. Herbert.

### OAKLANDERS BUY MINES.

J. C. Downey, Clarence E. Butler, Captain R. M. Henningsen and associates have completed the formation of a syndicate for the purpose of purchasing and developing mining claims in the Tonopah District in Nevada.

## BIG DEALS MADE IN THE REAL ESTATE

San Francisco Syndicate Takes Over the McDermott Tract in East Oakland and Will Build Homes for Sale

Highest Price Ever Paid for an Unimproved Residence Lot Is Paid for a Frontage on Lake Merritt

A syndicate, composed mostly of San Francisco men, has taken over the McDermott tract, one of the few large, undeveloped tracts left in the annexed district.

The highest front footage price ever paid in Oakland for an unimproved property, restricted to residential use, was that paid this week by Dr. J. L. deAzevedo.

### SIGNIFICANT TRANSACTION.

"This transaction is extremely significant," says Wickham Havens, president of the Oakland Real Estate Board, "in that it shows that the present realty market is not confined to the sale of small homes and home sites for modest cottages, as has been understood to be the case."

### BUSINESS DEAL.

Another transaction of significance is the purchase this week of the Thomson building, Seventeenth and Broadway, by the Hutchison Company at a valuation of \$300,000.

### WOMEN BUILD CLUBHOUSE.

RICHMOND, May 10.—The South Richmond Women's Club, with \$200 that was contributed by John H. Nichol, capitalist, added to its building fund, now has enough money from subscriptions to enable it to start construction of its clubhouse at 1214th street, in the harbor section of the city.

### Pittsburg Steamship Company Reorganizes

The Remeo Steamship Company, operating between Caspar, Mendocino county, and Fort Bragg and Pittsburg, and from San Francisco to Caspar, has applied to the railroad commission for authority to issue to the Caspar Lumber Company 1000 shares of stock of the par value of \$100 each in payment for the steamer Sugar and Lakme, and to provide \$10,000 for working capital.

## Aeroplanes "Made in Oakland" Survey of This New Industry

Oakland can build every part of an aeroplane except to supply the fabric that is used on the wings. There is no linen mill in Oakland. This fact developed last week when Eugene Bowles, secretary of the manufacturing Bureau of the Oakland Chamber of Commerce, made a thorough investigation into this subject at the request of the industrial bureau of the Aerial Age of New York City.

There is no factory for the complete production of aeroplanes, but every part of the machine is manufactured here except the cloth. The Hall-Scott factory at Berkeley produces simply engines, and it was at this plant that the famous Liberty motor was born.

The report of Mr. Bowles contains much valuable general information in addition to the detailed data upon aeroplanes, and is as follows:

Oakland (population 1919, 225,000) is situated on the continental side of San Francisco Bay. With Berkeley (population 1919, 38,000) and Alameda (population 1919, 30,500), it makes up the leading industrial center of Alameda county, which in 1919 had a population of about 400,000, of whom 320,000 resided in immediate proximity to the bay shore.

In Oakland are the terminal of five transcontinental routes—the Union Pacific-Southern Pacific, Santa Fe, Western Pacific and the Southern route via New Orleans and the Northern route via Seattle. Also in Oakland are the Pacific Coast terminal of the Lincoln Highway, transcontinental motor road and of the valley route of the California highway system.

Oakland is also a seaport, ships docking alongside the railroad terminals. Vessels sail from here to Pacific Coast points—San Diego, Los Angeles, Portland, Seattle, Vancouver and Alaska ports—and to Hawaii, the South Sea Islands, Australia, China, Japan and the Philippines. River boats also ply to Sacramento, Stockton and other interior points.

### SPECIAL POINTS.

This section of the western coast is highly selected for manufacturing because of (1) climate, which is productive of the maximum of output and the reduced cost of plant construction because of the absence of extremes of heat and cold; (2) high order of labor supply, from both the standpoint of intelligence and physical fitness; (3) factory land at reasonable prices alongside of rail and water shipping facilities, and (4) lower cost by 15 per cent in plant construction than in neighboring parts of California.

Electricity, generated by water power in the Sierra mountains, is almost the only power used. The rates are the lowest in the United States. In 1914 the installed horsepower totaled 13,368; in January, 1919, one electric corporation alone had installed more than 40,000 horsepower in industrial plants.

### WIRELESS TELEPHONES.

Magnavox Co., 2725 East Fourteenth St., Oakland.

### APPLIANCE PATTERN WORKERS.

Anderson and Brown, 419 Third St., Oakland.

### WATERPROOF CLOTHING.

Gold Medal Waterproofing Co., E. Twelfth St. and Twenty-fifth Ave., Oakland.

### METAL AIRPLANT PARTS.

Kawner Mfg. Co., Eighth street and Dwight way, Berkeley.

### CASTOR OIL.

B. W. Norton Mfg. Co., 720 Market St., Oakland.

### GLVES.

Western Glove Co., 1019-12 Jefferson St., Oakland.

### COMBINATION OVERALL SUITS.

Sibbett Mfg. Co., 1291 Seventh St., Oakland.

### BUSSBY GLOVE CO.

Bussby Glove Co., 1905 Adeline St., Oakland.

### COLUMBIA GLOVE CO.

Columbia Glove Co., 1110 Broadway, Oakland.

### WARRANTED KNITTING CO.

College Knitting Co., 3135 Grove St., Berkeley.

### STAMPING AND CUTS.

Stamps and Dies, 1291 Seventh St., Oakland.

### AMERICAN COIL REGISTER CO.

American Coil Register Co., 4065 Hollis St., Emeryville.

## "MADE IN CALIFORNIA" SUCCESSFUL

Home Industry League Will Make Event Annual and Will Give It a Thorough, and State Wide Character

Baldwin Vale Tells How the Idea Developed From Good Roads Meeting Held in Merced to Discuss Affairs

"Made in California Week" has passed and zone, but so successful was this first attempt to specialize in California made products that it is to be repeated as an annual, if not a semi-annual event.

### HOW IT STARTED.

"The Made in California Week" idea originated at a little meeting that was held in Merced to advocate the building of a national highway into the Yosemite valley."

### WIRELESS TELEPHONES.

Magnavox Co., 2725 East Fourteenth St., Oakland.

### APPLIANCE PATTERN WORKERS.

Anderson and Brown, 419 Third St., Oakland.

### WATERPROOF CLOTHING.

Gold Medal Waterproofing Co., E. Twelfth St. and Twenty-fifth Ave., Oakland.

### METAL AIRPLANT PARTS.

Kawner Mfg. Co., Eighth street and Dwight way, Berkeley.

### CASTOR OIL.

B. W. Norton Mfg. Co., 720 Market St., Oakland.

### GLVES.

Western Glove Co., 1019-12 Jefferson St., Oakland.

### COMBINATION OVERALL SUITS.

Sibbett Mfg. Co., 1291 Seventh St., Oakland.

### BUSSBY GLOVE CO.

Bussby Glove Co., 1905 Adeline St., Oakland.

### COLUMBIA GLOVE CO.

Columbia Glove Co., 1110 Broadway, Oakland.

### WARRANTED KNITTING CO.

College Knitting Co., 3135 Grove St., Berkeley.

### STAMPING AND CUTS.

Stamps and Dies, 1291 Seventh St., Oakland.

### AMERICAN COIL REGISTER CO.

American Coil Register Co., 4065 Hollis St., Emeryville.

BALDWIN VALE, president of the Home Industry League of California.



### EASTBAY INTERESTED.

The Eastbay section is generously represented among the officers of the Home Industry League, as follows: Baldwin Vale, president; R. R. Rogers, first vice-president; H. D. Guitman, second vice-president; R. H. Marchant, secretary; William C. Kiefer, treasurer; Edwin H. Brown, manager and executive secretary; Jean Loughborough, publicity director.

Director—F. M. Davidson, California Cotton Mills, Oakland; F. D. Fagan, General Electric Company, San Francisco; J. H. Harbour, Shasta Water Company, San Francisco; J. A. Hieronimus, Brewers' Protective Association, San Francisco; H. W. Jackson, James Graham Manufacturing Company, San Francisco; H. T. James, Bass-Deuter Paint Company, San Francisco; S. P. Johnston, Johnston-Ayres Company, San Francisco; James B. Keister, National Lead Company, San Francisco; William C. Kiefer, Wells-Fargo Express Company, San Francisco; R. H. Marchant, Marchant Calculating Machine Company, Oakland; Arthur H. Meussdorfer, J. C. Meussdorfer Sons, San Francisco; R. D. Quinn, Sperry Flour Company, San Francisco; R. E. Rogers, R. Rogers Chemical Company, San Francisco; Leon L. Ross, Ross Bros., Inc., San Francisco, Oakland and Berkeley; A. C. Rulfsman, A. C. Rulfsman Company, San Francisco; S. L. Sauter, L. Samier & Sons, San Francisco; A. C. Seales, Moreland Motor Truck Company, Los Angeles; Baldwin Vale, patent attorney, San Francisco; Richard Schmidt Jr., Schmidt Lithograph Company, San Francisco.

### PROPELLERS.

Jacuzzi Brothers, 2934 San Pablo Ave., Oakland.

### Helped Win Big Trade Convention

The Daily Journal of Commerce of San Francisco issued a special edition in connection with the delegation of California manufacturers who went to Chicago to attend the National Trade Convention to bring the 1920 convention of that organization to San Francisco.

### TAKE UP OAKLAND BONDS.

The preliminary draft of the proposed mortgage for \$100,000,000 provided that the bonds are to be issued in series. The rates of interest are to be determined by the power company directors. After the issue of \$5,000,000 of bonds provided for in the railroad commission order, additional bonds are to be issued in an amount not exceeding \$0 per cent of the value of additions and betterments. The new mortgage also provides for a cumulative sinking fund with the first payment on January 1 of the year that the bonds are to be issued. On that date and yearly thereafter there will be paid to the trustee in cash for the sinking fund, an amount equal to 1 1/2 per cent of the bonds outstanding. The sinking fund payments, one-third is to be used to purchase bonds of the new company, and the other two-thirds to retire the old bonds.

### A HOME CENTER.

The figures of the United States census show that 50 per cent of the families living in Oakland own their own homes.

### RAIL AND WATER.

The first payment on the new mortgage made for the transfer of the properties of the California Electric Generating Company, the old Western Power Company owns all of the \$3,000,000 common stock of the Oakland company.

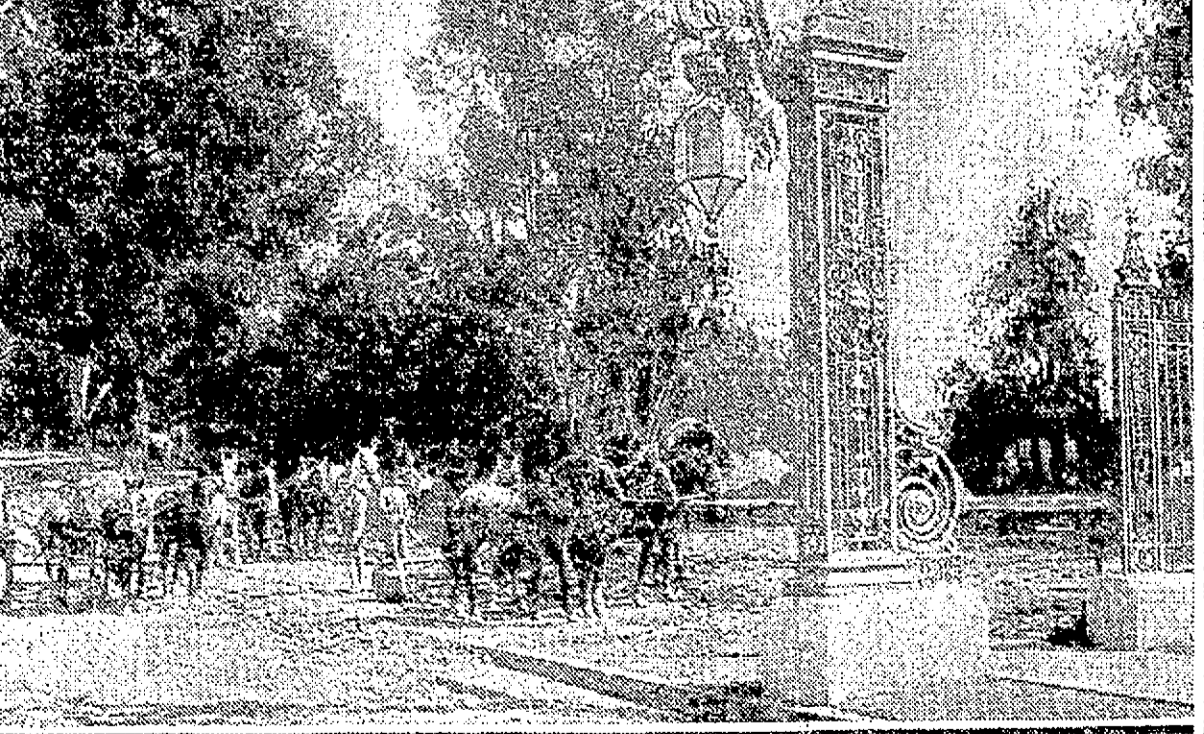
### THE DEVELOPMENT BUREAU OF THE

Oakland Tribune

will furnish accurate and reliable information about any part of the Great East Bay District, its prospects, possibilities, resources and opportunities, to all who wish such information. Exact data will be furnished where such is obtainable. No one section or part of the Great East Bay District will be advertised to the disadvantage of another, and no person, firm or corporation will be advertised to the exclusion of others. Those wishing information about this section for themselves or for friends or relatives in other parts of the world are requested to communicate with THE DEVELOPMENT BUREAU, Oakland Tribune, Oakland, Cal.

## \$100,000 WORTH OF STREET WORK

Work begun on the building of \$100,000 worth of streets in Lakeshore Highlands, meaning the development of the last big piece of unimproved property in the central part of Oakland.



Evidence that the full tide of building activity and development is upon us is to be found in the letting of a contract by the Walter H. Leimert Company for street work in Lakeshore Highlands amounting to over \$100,000.

It comprises Trestle Glen and Sather Park, wooded with groves of oaks and eucalyptus and famous for years as idyllic picnic grounds. Work of development on Lakeshore Highlands was started last year, but held up by the government, because of shortage of materials. A small part of the property, lying south of Trestle Glen, known as the Excelsior Boulevard section, was sold by the Walter H. Leimert Company in a short, snappy advertising campaign this spring, sales amounting to over \$100,000 and practically disposing of all the Excelsior Boulevard frontage. Now, following the rapid completion of the street work on the main part of the Lakeshore Highlands just behind the wrought iron gates, another far more extensive advertising campaign will be launched which, on account of the very beautiful character of the property and its location in the heart of the Lake District, on the Key Route, is expected to dispose of the greater part of Lakeshore Highlands this summer.